



Grain Tech newsletter

SOLUTIONS & PROCESSES FOR THE FEED MILLING & MATERIAL HANDLING INDUSTRIES

1. Extensive Range Of Bulk Materials Handling Equipment

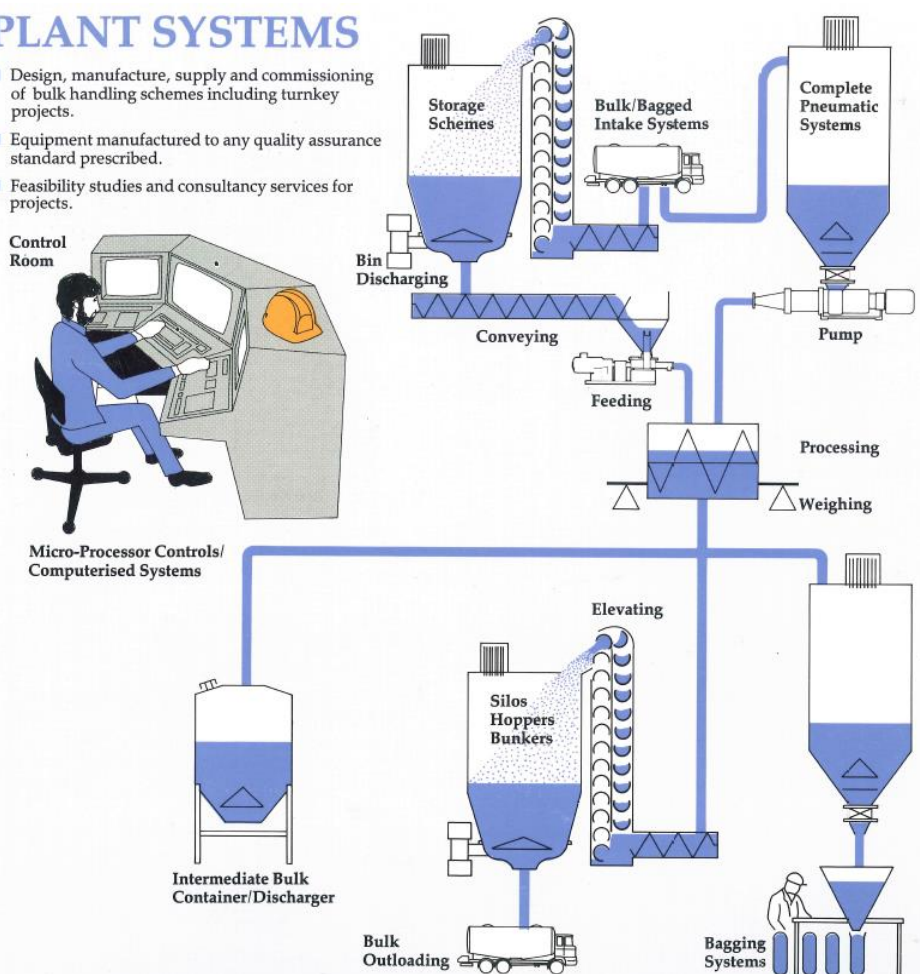
Inside This Issue

- 1 EXTENSIVE RANGE OF BULK MATERIALS HANDLING EQUIPMENT
- 2 BUCKET ELEVATORS
- 3 EN MASS DRAG LINK CONVEYOR
- 4 DRAG CHAIN CONVEYORS
- 5 Z PATTERN BUCKET ELEVATORS
- 6 SUPERFLO DRAG LINK CONVEYORS
- 7 SCREW CONVEYORS
- 8 METERING SCREW FEEDERS
- 9 TWIN SCREW FEEDERS
- 10 ROTARY DISCHARGES
- 11 BIN VIBRATORY DISCHARGERS
- 12 ROTARY DISTRIBUTORS
- 13 BULK STORAGE SILOS
- 14 SLIDE GATE VALVES
- 15 DIVERTER VALVES
- 16 AIR CUSHION CONVEYOR
- 17 MAGNETIC SEPARATOR
- 18 SPECIAL APPLICATION BUCKET ELEVATORS
- 19 PNEUMATIC CONVEYING
- 20 INTAKE RECEIVING HOPPER (FROM PIT)
- 21 DISC AND TUBE CONVEYOR
- 22 PNEUMATIC CONVEYING UNIT
- 23 INTEGRATED CONTROL SYSTEMS

We are old hands in the materials handling field and will design handling systems to meet your needs. From a few pounds per hour to hundreds of tonne per hour Grain Tech has a solution with a commitment to superior performance at an economical investment. Apart from the well-known drag link conveyors, screw conveyors and bucket elevators we have unique handling equipment such as rotary metering feeders, volumetric blenders, bin activators and multi way diverter valves. Installation arrangements are detailed using the latest CAD design software operated by experienced engineers.

PLANT SYSTEMS

- Design, manufacture, supply and commissioning of bulk handling schemes including turnkey projects.
- Equipment manufactured to any quality assurance standard prescribed.
- Feasibility studies and consultancy services for projects.



PO Box 97420, Manukau City, Auckland 2240 – 55B Druces Rd, Manukau City, Auckland - Phone: + 64 9 2636926
Email: admin@graintech.co.nz – Website: www.graintech.co.nz



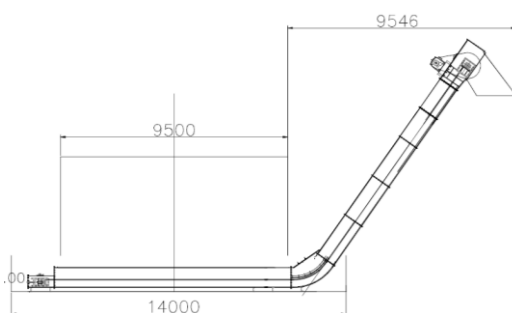
2. Bucket Elevators

- Available in capacity sizes from 15 m³/hr. through to 820 m³/hr.
- Fitted with steel or plastic buckets according to requirements
- Fire resistant and anti-friction roller cover fitted to the head pulley
- Equipped with explosive resistant and back stop device
- Incorporates heavy duty fabrication for corner folds and flanges
- Fitted with high durability polyester belt and heavy duty threaded rod belt adjustment arrangement
- May be fed on either the up leg or down leg according to application

Optional belt alignment and speed monitoring



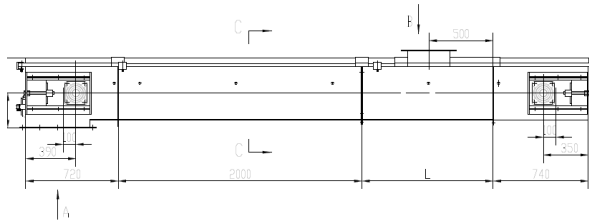
3. En Mass Drag Link Conveyors



- Heavy duty industrial series supplied in standard horizontal, inclined and combination horizontal / inclined configurations.
- Each type available in sizes from 120 mm wide to 630 mm wide with capacities from 12 m³ / hr. to 1600 m³ / hr., in straight, 45 degree as well as "Z" pattern arrangements
- Suited to handling a wide range of material types including cereals, grains, oil seeds, powders and prilled chemicals, cement, coal, minerals, sand, pellets etc.
- Optional single and multiple infeed and discharge arrangements available to suit requirements.
- Available in painted carbon steel and stainless steel finish.
- Custom designed to suit each application.



4. Drag Chain Conveyors



- Standard design series
- Available in capacity sizes from 30 m³/hr through to 1600 m³/hr.
- Heavy Duty folded and flange fitted design with bolt together fabrication
- Fitted with high tensile chain and UHMW Polyethylene conveyor flighting for stable, low noise running and long service life
- Multi point feeding and discharge to suit installation requirements
- Incorporates heavy duty gear drive arrangement and chain adjustment mechanism
- Equipped with safety over flow alarm



5. Z Patten Bucket Elevators

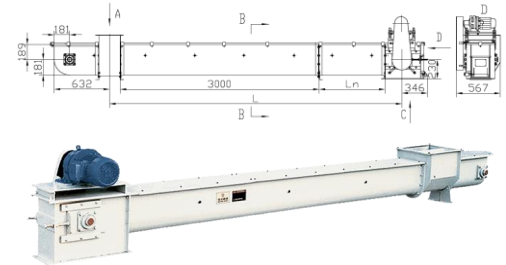


- Available in capacities from 6.5 MTPH – 25 MTPH in six sizes.
- Suited for incorporation into transfer applications where gentle handling is necessary such as seed and grain varieties, rice grain, specialty grain handling applications as well as finished product handling where non degradation is required.
- Head and boot assemblies and leg sections are designed and fabricated to provide optimum sealing and strength.
- Dual inlet assemblies to meet process requirements.



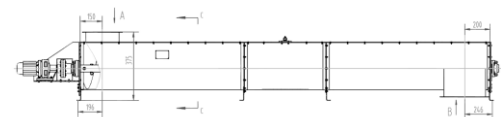
6. Super Flo Draglink Conveyors

- Capacity varies from 30 m³/hr. through to 900 m³/hr.
- Incorporates self-cleaning through assembly fitted with UHMW polyethylene conveyor flighting for high performance and wear resistance
- Operates quietly and is fitted with high tensile chain assembly for consistent and reliable performance with low power requirements
- Fitted with heavy duty gear drive unit and chain and sprocket transmission together with convenient and easily adjusted chain adjustment arrangement
- Includes safety overflow alarm facility and speed monitoring unit
- Heavy duty folded and flange fitted design with bolt together fabrication



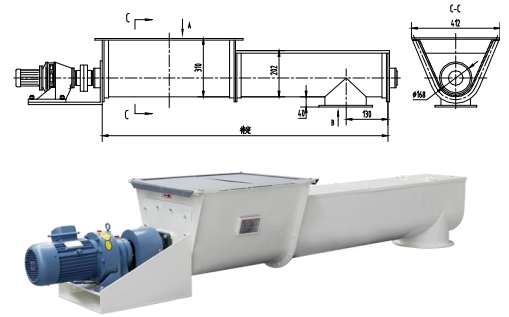
7. Screw Conveyors

- Capacity sizes from 10 m³/hr. through to 320 m³/hr.
- Heavy duty fabrication with folded and flanged assembly components
- Cyclodrive gear unit c/w chain & sprocket transmission
- Installed with intermediate hanger bearings and heavy duty flange mounted bearings for the shaft spindles
- May be supplied with overflow safety cut out device



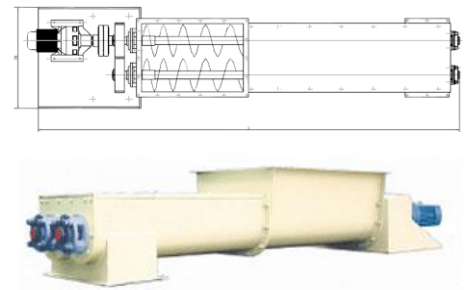
8. Metering Screw Feeders

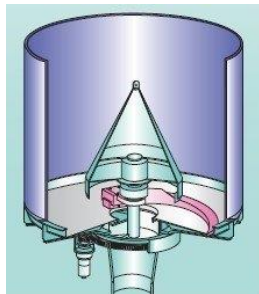
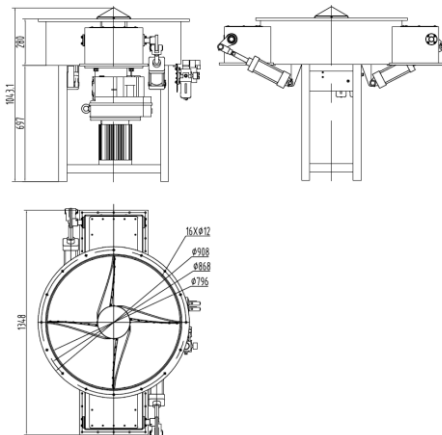
- Capacity sizes from 10 m³ / hr. through to 800 m³ / hr.
- Fitted with heavy duty variable pitched feed section flighting.
- Heavy duty folded and flange fitted design with bolt together fabrication and assembly.
- Optional direct drive or chain and sprocket transmission from a cyclo-drive gear unit.



9. Twin Screw Feeders

- Capacity sizes from 20 m³ / hr. through to 800 m³ / hr.
- Incorporates variable pitch flighting for the infeed section.
- Fitted with flange mounted bearing sets complete with seals.
- Optional direct drive or chain and sprocket transmission from cyclo-drive gear unit.
- Suited for high capacity metering feeding and batching applications.

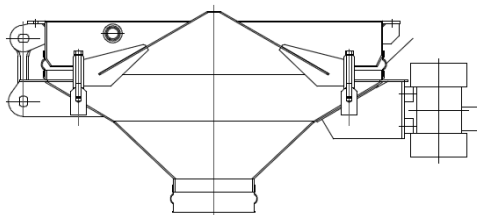




10. Rotary Discharges

- Capacity sizes from 5 m³/hr. through to 500 m³/hr.
- Suited for metering feed discharge into weigh hoppers and regulating material supply to processing applications
- May be supplied with either a single or a dual discharge outlet
- Heavy duty fabrication with welded and flanges bolt together assembly
- Rotor is driven from a cyclo-drive gear unit c/w V/S control

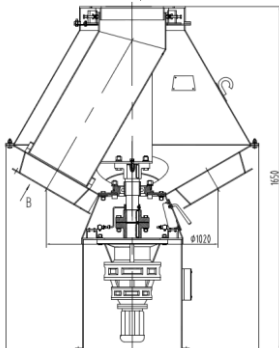
11. Bin Vibratory Discharges



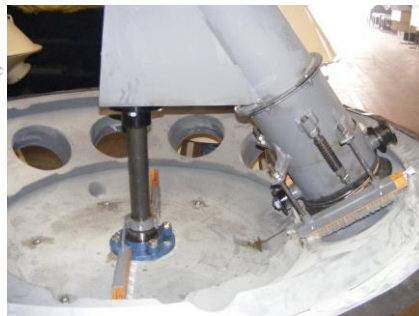
- Proven worldwide to give continuous but controlled flow of difficult to handle materials from bulk storage silos and bins through the controlled use of vibration.
- Eliminates possibility of ratholing, degradation and segregation of materials within the silo to ensure an even flow of material on a mass flow basis.
- May be arranged with single or multiple discharge outlets.
- Supplied as a pre-assembled unit ready to be bolted upto the silo or bin.
- Ideal for regulated feeding to metering feed conveyors, rotary valves, weigh belt feeders, transfer conveyors and delivery to bulk tankers.
- Available in a range to sizes and capacities from 600 mm Ø – 3000 mm Ø.
- May be supplied in painted carbon steel and stainless steel fabrication.



12. Rotary Distributors



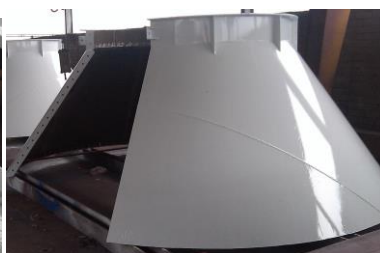
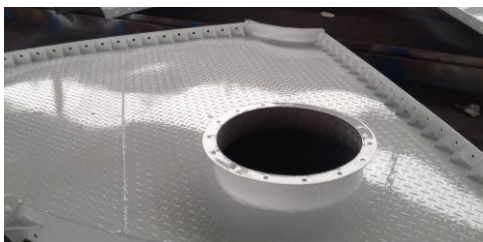
- Capacity sizes from 10 m³ / hr. through to 70 MTPH
- Suited to alternative spout sizes for 200 mm, 250 mm, 300 mm and 320 mm diameter
- Available with optional 4, 6, 8, 10, 12, 14 or 16 outlet from single inlet
- Heavy duty fabrication incorporating welded and flange fit bolt together components
- Convenient for simplifying bulk material multi-distribution transfer



13. Bulk Storage Silos



- Bolt together panel design suited for on-site assembly.
- Capacities from 10 m³ through to 450 m³
- Available with conical round outlet discharge or flanged hopper to suit various metering feed dischargers.
- Fabrication is from heavy gauge carbon steel flanged panels designed for sealant and site bolt together assembly complete with bolt together roof panel assembly and flanged conical hopper. The silo hip is fitted with heavy duty gusseted leg mounting assemblies suited to fitting the round section leg supports complete with bracing members. High tensile bolts in two rows are used to secure the panels on assembly. A top center inlet spigot is fitted and level sensor flanged cut outs are provided. OSH compliant hand railing, kick plates and access ladder complete with man protective cage is allowed for.



To meet the requirements for bulk handling, Grain Tech provides bolt together galvanized hopper bottom silos ranging from 3.5 to 22 meters in diameter and capacities of 5 - 5000 metric tons.

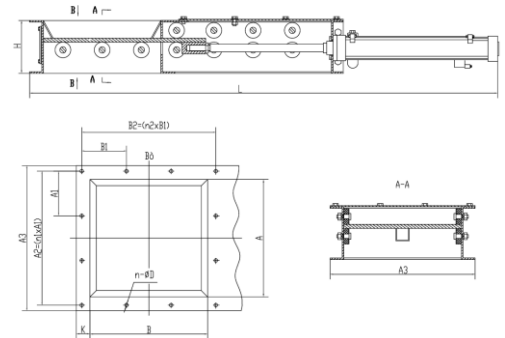


These silos may be elevated for bulk transport loading. Dust free discharge chutes may be fitted to bulk out loading silos to maintain clean transfer and out loading operations.



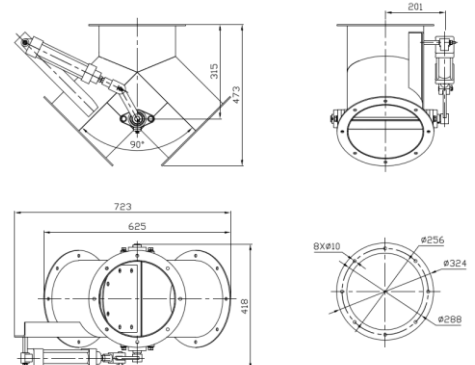
14. Slide Gate Valves

- Available in a wide range of sizes to suit different spouting requirements from 200 mm x 200 mm through to 800 mm x 800 mm and capacities from 50 m³/hr. through to 800 m³/hr.
- Heavy duty design with welded and bolt together fabrication
- Available with either pneumatic, electro-serve or manual activation
- Easily installed with low maintenance and reliable operation



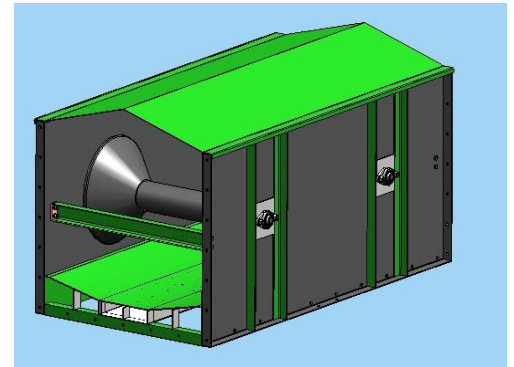
15. Diverter Valves

- Available in sizes from 200 mm x 200 mm through to 800 mm x 800 mm and capacities from 50 m³/hr. through to 800 m³/hr. with 30° and 45° discharge angle
- Welded and flange fit fabrication with heavy duty flap assembly
- Available with pneumatic or electro-serve activation
- May be supplied with optional discharge configuration



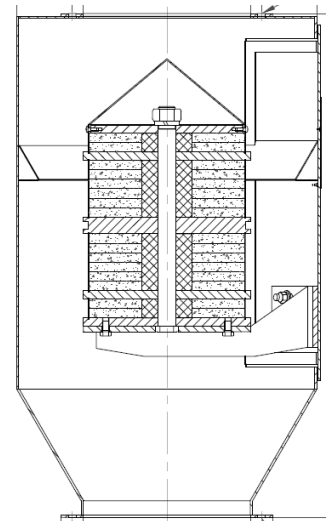
16. Air Cushion Conveyor

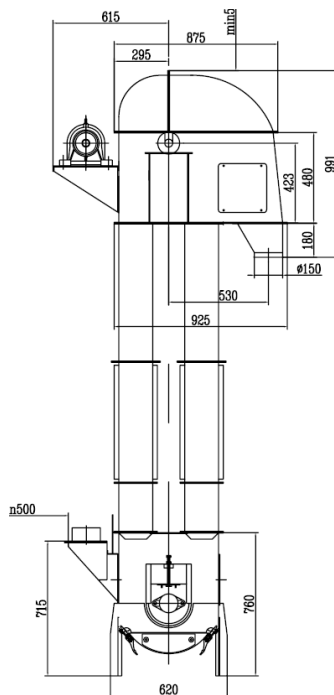
- Capacity sizes upto 2500 m³ / hr.
- Suited for long distance conveying applications
- Smooth and reliable operation with consistent belt tracking
- May be run in either direction and arranged to discharge at either end or centre point according to installation requirements.
- Incorporates self-cleaning features and safety features including alignment sensing, pressure sensor, speed monitoring and choke sensing.
- Suited for incorporation into a wide range of conveying applications where high capacity operation at a lower operating cost is called for.



17. Magnetic Separators

- Capacity sizes from 10 MTPH to 100 MTPH
- Five different sizes.
- Rare earth bulb design installed upto a swing away door for ease of cleaning.
- Magnetic field intensity = ≥ 3000 GS
- Iron removal efficiency = $\geq 99\%$
- Available with either stainless steel or optional carbon steel casing assembly.





18. Special Application Bucket Elevators

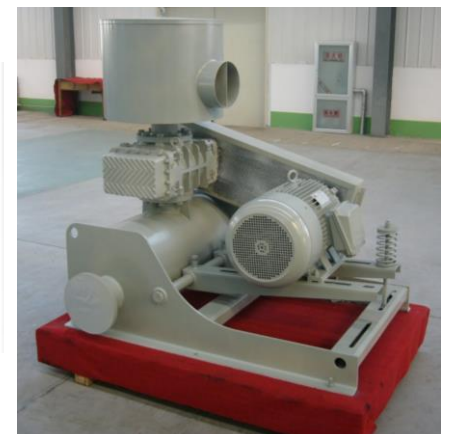
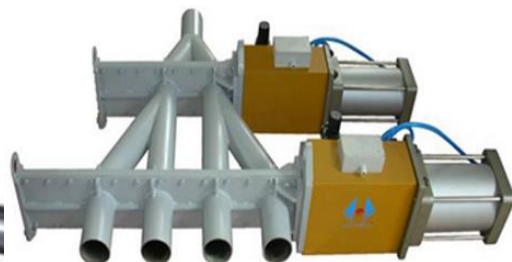
TDTGZ Series Bucket Elevator – This series of bucket elevator is designed for gently handling of seed grain, oil seeds, pulses and similar products where degradation of the seed and damage to the germination quality of the material is to be avoided. The bucket elevators are also ideal for incorporation within the rice milling, maize milling, rice drying, maize drying and similar cereal grain and seed processing applications where attritional product damage is to be minimized and non-contamination from one line to another is called for.

The main features incorporated into this series of bucket elevator are:

- Special design elevator head section for lower linear velocity product discharge while avoiding backflow of product down the return leg.
- Flanged double entry fittings to the elevator boot section designed for gentle product entry and minimum deflection.
- Rubber bonded head pulley and squirrel cage type tail pulley for optimum friction between the elevator belt and pulley drives.
- Easily removed boot clean out slide panel to enable complete clean out from one line to another.
- Large section removable inspection door fitted to the up leg section to enable easy inspection and wipe out of the buckets where required.
- Heavy duty fabrication with sealed flanges for all elevator assemblies.
- Controlled metering to either of the down leg or up leg boot section for versatile planning-in to the process arrangement.
- Finish is in a top enamel coat over a rust resistant undercoat onto a prepared metal surface.

19. Pneumatic Conveying

- Dedicated to providing competitive solid materials pneumatic handling solutions and services.
- Positive dilute phase pressure conveying.
- Negative dilute phase vacuum conveying.
- Dense phase pressure pneumatic conveying
- Bulk material unpacking conveying systems
- Automatic ingredient metering + weighing systems
- Capacities from a few hundred kg through to 30MT per hour
- Complete range of pneumatic conveying equipment to suit new and retro fit installation applications



20. Intake receiving conveyor (from pit)

Grain Tech can manufacture and supply suitable conveyors for drive over pit truck discharge. The system comes complete with:

- Shallow profile hopper fabricated from carbon steel
- Top drive over grid suitable for discharged ingredients to flow through complete with heavy duty support members capable of supporting loaded truck and trailer units.
- En-masse drag link design pick up conveyor
- Horizontal in feed with inclination for discharge into the following bucket elevator
- Fabricated from heavy duty carbon steel folded and welded casing suited for bolt together assembly. High tension conveying chain fitted with UHMW flighting



21. Disc and Tube Conveyor

The tube chain conveyor is designed to continuously convey fine powder granules and bulk materials. It can be installed as horizontal and vertical and standalone vertical arrangement

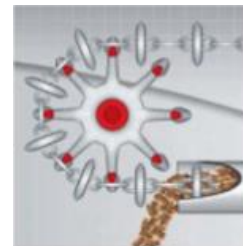
Delivery capacity: 0.4-300m³/h according to model & size

Max. Delivery Distance: 80m (horizontal); 60m (vertical)

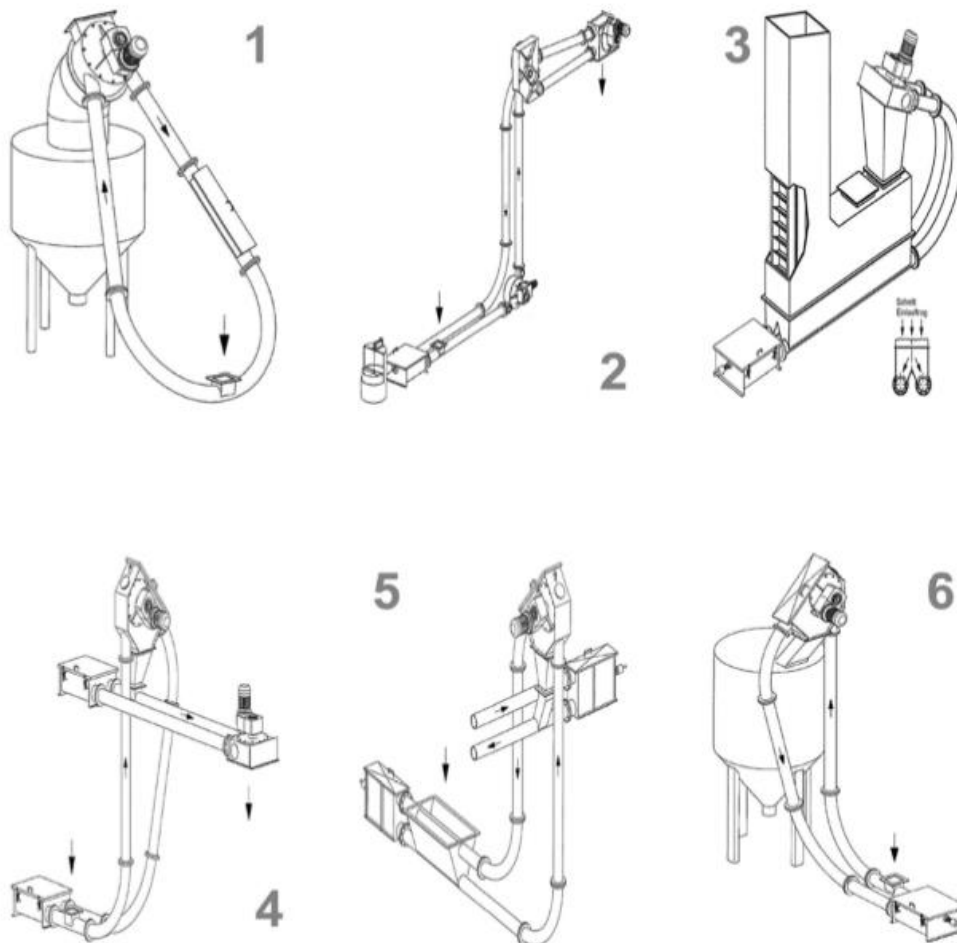
Power: 0.2-30KW according to model & size

Tube Chain Conveyor System's Feature:

1. Sealed Pattern: dust-tight
2. Low Energy Consumption
3. No dead areas
4. No metal on metal friction
5. Low maintenance cost
6. Long life time operation
7. Explosion and pressure shock resistant design
8. Possible to re-start in filled state
9. Minimal grain or material degradation



Possible configurations:



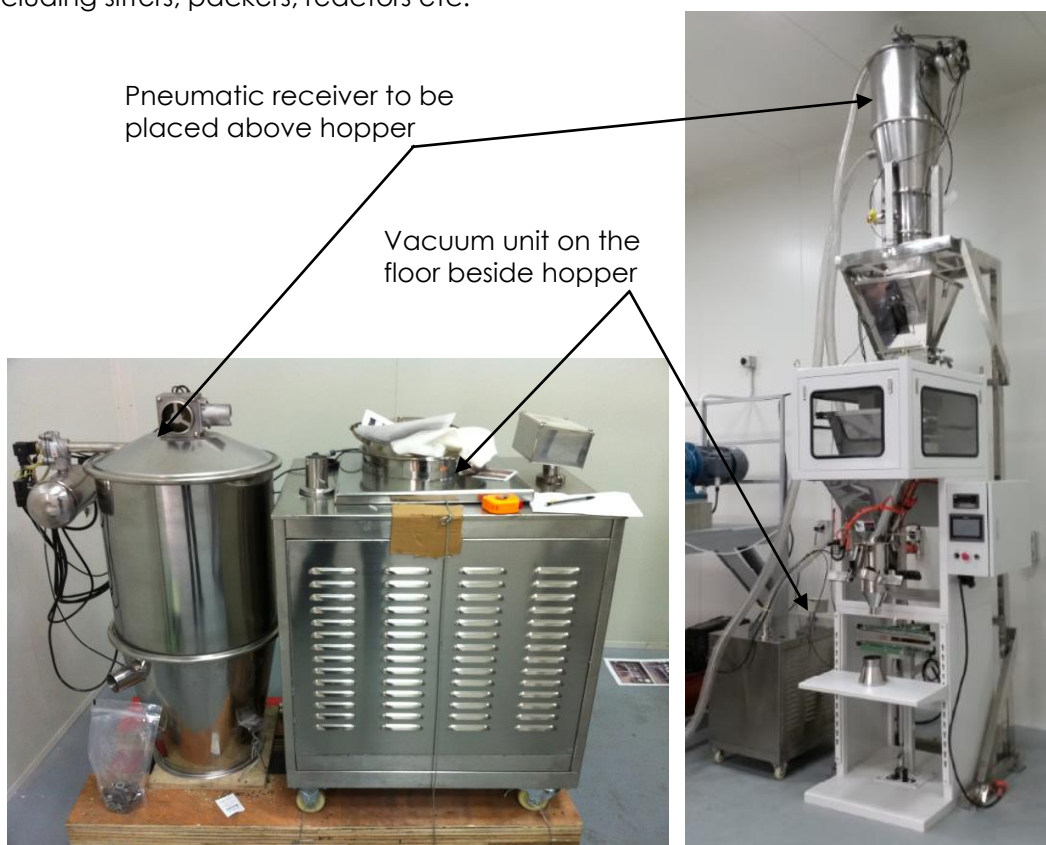
22. Pneumatic Conveying Unit

The vacuum conveyor is designed for industrial applications incorporating heavy duty components and is the ideal transfer equipment, used for transporting powder and granular materials for feeding the materials directly into mixers, sifters and other processing equipment. It reduces the likely dust emissions and is GMP certified. It is widely used in the pharmaceutical, foodstuff, feedstuff, chemical and plastics industries and for general processing material handling applications. The capacity range is from 0.4-6 metric ton per hour.

Working Principle:

The vacuum conveyor consists of a vacuum unit (no oil, no water), feeding tube, PE filter, vacuum hopper, automatic control device, pneumatic discharging device and a compressed air pulsing unit.

The ZKS conveying units have the characteristics of low power consumption high capacity, low noise and reliable operation. It is the ideal type of equipment for transferring powder and granular materials to mixers and processing equipment including sifters, packers, reactors etc.



23. Integrated Control Systems

For reliable and efficient plant operation, GTE provide complete package Integrated Control Systems incorporating all necessary contactors, starters, over loads, mains switches, housed within easy accessed MCC units. PLC operational units complete with pc's and monitors together with custom software complete the pre-wired package ready for field wiring to the to the equipment items on site. This Integrated Control System arrangement enables greater installation economics and a significant saving in installation time requirements.



24. Engineering Services

Over the past twenty-four years we have completed projects throughout Australasia offering a total capability of design, project management, equipment supply, installation and commissioning within the bulk materials handling and associated cereals processing industries.

This approach has enabled customers to make the most cost effective use of their resources according to individual specifications. Using our most up-to-date techniques and design software, we can meet your requirements. Below are a few examples of projects undertaken.

